

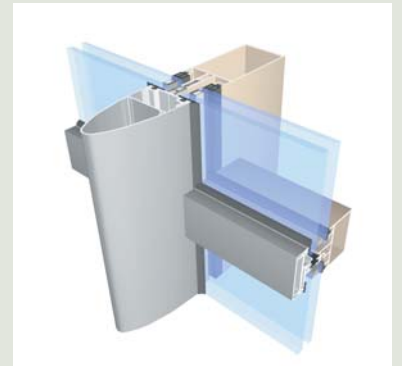
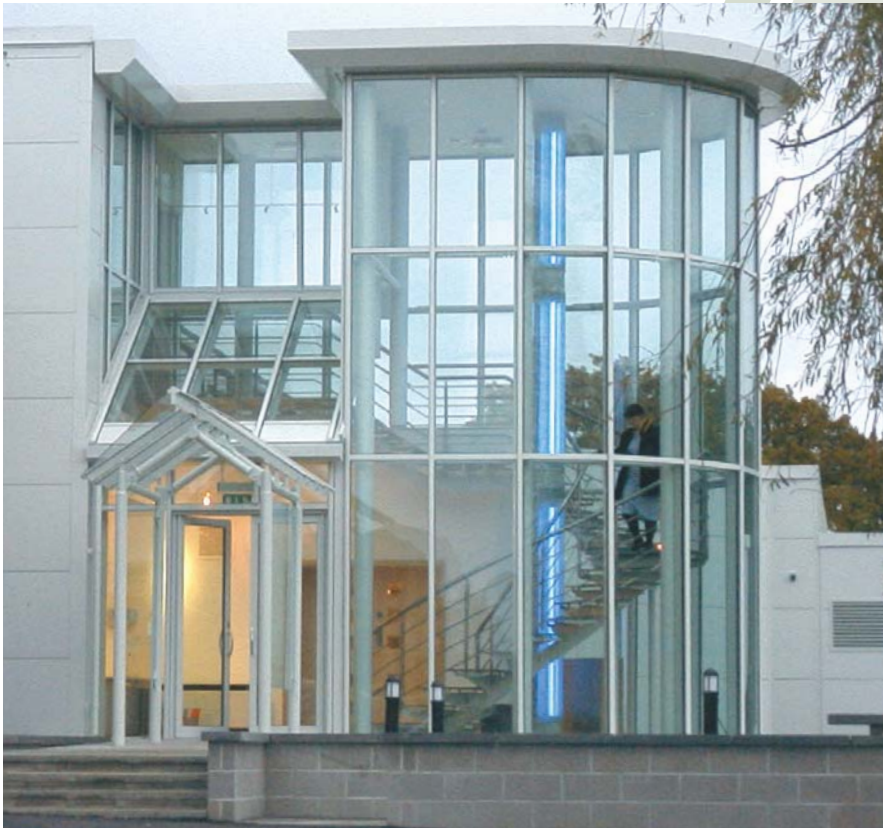


The **MC Wall** is a curtain wall system designed to create a dramatic but practical façade, with the option of sloped and facet-shaped glazing whilst allowing maximum light into small or large multi-storey buildings. Rapid on-site installation and concealed transoms, for seamless/uninterrupted glass to glass joints, are among the many special features of this versatile polyamide thermal break system. The system incorporates a top hung frameless vent and also accommodates all Smarts windows, doors and horizontal sliders.

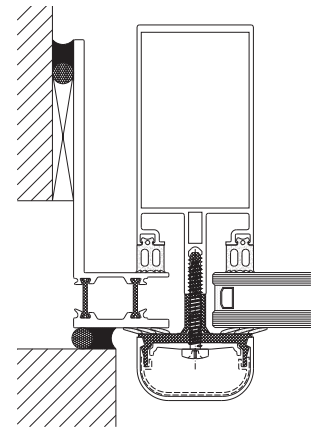


CURTAIN WALL

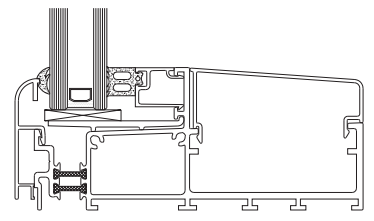
MC Wall



Horizontal Section



Vertical Section



Trade Name	MC Wall
Building applications	Suitable for small and large multi-storey office buildings. Mullion and transom depths to suit design construction and structural requirements. Sloped glazing possible, straight and slightly facet-shaped vertical glass walls
Special features	Rapid on-site installation using stainless steel pin joints to connect transoms to mullions. Transom profiles have dedicated polyamide thermal break. Concealed transoms thereby giving glass to glass joints
Materials	Aluminium alloy 6060/6063 T5/T6 in condition F22 to NBN P21-001 and DIN 1725 Co-extruded profiles to DIN 7863, TV 110 NFP 85301, ISO 3994 Thermal break: polyamide strips PA 6.6. 25% reinforced with glass fibre Seals: EPDM to DIN 7863, TV 110 NFP 85301, ISO 3994
Finish	Polyester powder coat to BS 6496/APA-Qualicoat Guidelines. Anodised satin or bronze colours with EWAA/EURAS-Qualinod quality label. Dual colour available
Profile width	55mm
Depth of frame	79mm – 250mm
Glass	Glazing options from 24mm to 33mm and single glazing
Sash inserts	MC Wall top hung frameless vent. Accommodates all Smarts windows, doors and horizontal sliders.
Weather performance	Tests conducted in accordance with STS 52.0 Complies with Doc. L for thermal transmittance Passed CWCT standard Test Report available on request



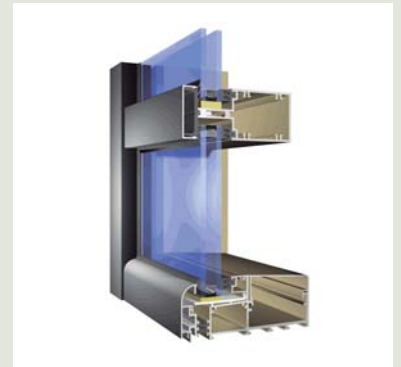


SC Frame is a curtain wall system designed to provide optimum thermal performance and rapid on-site installation, facilitated by the ladder frame method of construction, i.e. pre-assembled in sections during fabrication. SC Frame is suitable for use in low to medium rise facades, such as large shop fronts and showrooms where the application demands an attractive glazing system that delivers maximum glass area and ingress of light. The system will accommodate a wide range of Smarts windows and entrance doors.

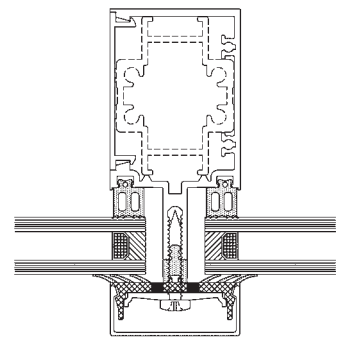


CURTAIN WALL

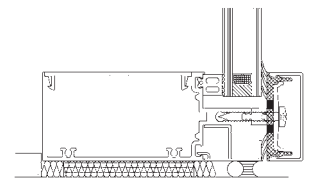
SC Frame



Horizontal Section



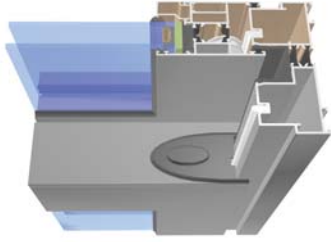
Vertical Section



Trade Name	SC Frame
Building applications	Suitable for low to medium rise façades including large shopfronts and showrooms, where ease of installing large panes of glass is a pre-requisite.
Special features	Constructed in ladder frames in the factory allowing rapid on-site installation. Stainless steel self-tapping screws are used through the mullion into integral cores within the transom or a cleating method can be used for manufacture.
Materials	Aluminium alloy 6060/6063 T5/T6 in condition F22 to NBN P21-001 and DIN 1725 Thermal break and seals: EPDM to DIN 7863, TV 110 NFP 85301, ISO 3994
Finish	Polyester powder coat to BS 6496/APA-Qualicoat Guidelines. Anodised satin or bronze colours with EWAA/EURAS-Qualinod quality label Dual colour available
Profile width	55mm
Depth of frame	75mm, 100mm and 125mm
Glass	Single glazing 6mm, 10mm and 12mm and double glazing 24mm, 28mm and 32mm
Sash inserts	Accommodates Smarts Intruder, Alitherm, Visoline and Slide Windows and Doors.
Performance	Complies with Doc. L for thermal transmittance



Superglide Door



Designed to separate terrace areas and living quarters in houses and flats. Provides separations for conservatories looking out onto the garden and also creates space in passage-ways.

Thermal break system for patio doors (2, 3, 4 & 6 pane) and windows with thermal break

Aluminium Alloy 6060/6063 T5 in condition F22 (according to NBN P21-001 and DIN 1725)

Sealings: EPDM according to DIN 7863, TV 110, NFP 85301, ISO 3994

Thermal break: polyamide strips PA 6.6.25% reinforced with glass fibre

Polyester powder coat to BS 6496/APA-Qualicoat Guidelines.
Anodised satin or bronze colours with EWAA/EURAS-Qualinod quality label.
Dual colour available.
Wood-effect colour available (powder coated according to Qualicoat)

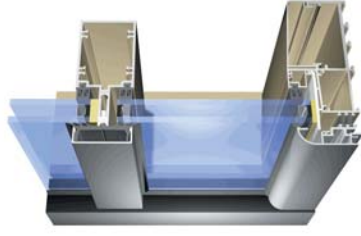
Various options depending on design considerations

Outer frame 116 mm

Glazing from 4 to 38 mm

Tests conducted in accordance with STS 52.0
Complies with Doc. L for thermal transmittance
Test Report available on request

SC Frame



Suitable for low to medium rise façades including large shopfronts and showrooms, where ease of installing large panes of glass is a pre-requisite.

Constructed in ladder frames in the factory allowing rapid on-site installation. Stainless steel self-tapping screws are used through the mullion into integral cores within the transom or a cleating method can be used for manufacture

Aluminium alloy 6060/6063 T5/T6 in condition F22 to NBN P21-001 and DIN 1725

Thermal break and seals: EPDM to DIN 7863, TV 110 NFP 85301, ISO 3994

Polyester powder coat to BS 6496/APA-Qualicoat Guidelines.
Anodised satin or bronze colours with EWAA/EURAS-Qualinod quality label
Dual colour available

55mm

7.5mm, 100mm and 125mm

Single glazing 6mm, 10mm and 12mm and double glazing 24mm, 28mm and 32mm

Accommodates Smarts Intruder, Alitherm, Visoline and Slide Windows and Doors.

Complies with Doc. L for thermal transmittance

Building applications

Special features

Materials

Finish

Profile width

Depth of frame

Glass

Sash inserts

Performance

We reserve the right to make changes to the product specification as technical developments dictate and without prior notice.

Pictures shown in this brochure are for illustrative purposes only and are not binding in detail, colour or specification.

Alitherm, Duootherm, Imperial, Intruder, MC Wall, SC Frame, Shopline, Slide, Triline, Visofold, Visoglide and Visoline are trademarks of Smart Systems Ltd.
© Smart Systems Ltd 2009