

# TITAN

## Self-assembling sliding handles for sliding windows



### Fast assembly

One of the most important goals in the design of this new range was to make the work of the aluminium carpenters and installers much easier.

**Automatic installation.** Both the lock and finger pull have an automatic installation system which allows for differences in the length of the recess of ± 3 mm and also have wider flanges to hide any mechanized imperfections.

**Automatic - Manual closing action.** The new range makes it as simple as removing a spring to change from an automatic closing action to a manual one.



### Easy adjustment

Most of the sliding handles do not have a system to regulate the locking hooks, so the window does not close properly, allowing air and water to get inside.

**Adjustment.** The frontal hook adjustment system with a closing mechanism allows adjusting the hook even when the window is closed. This means that the window is more weatherproof than ever.

**Retention.** To ensure closure position, some grooves on the hooks have been made in order to improve retention when the hook hits the lock and the handles are improperly used.



### Security

**Fixing system.** The fixing system location has changed from the lower part of the handle to the upper part. This makes the dismantling of the handle less intuitive, as the locks work by pressing downwards.

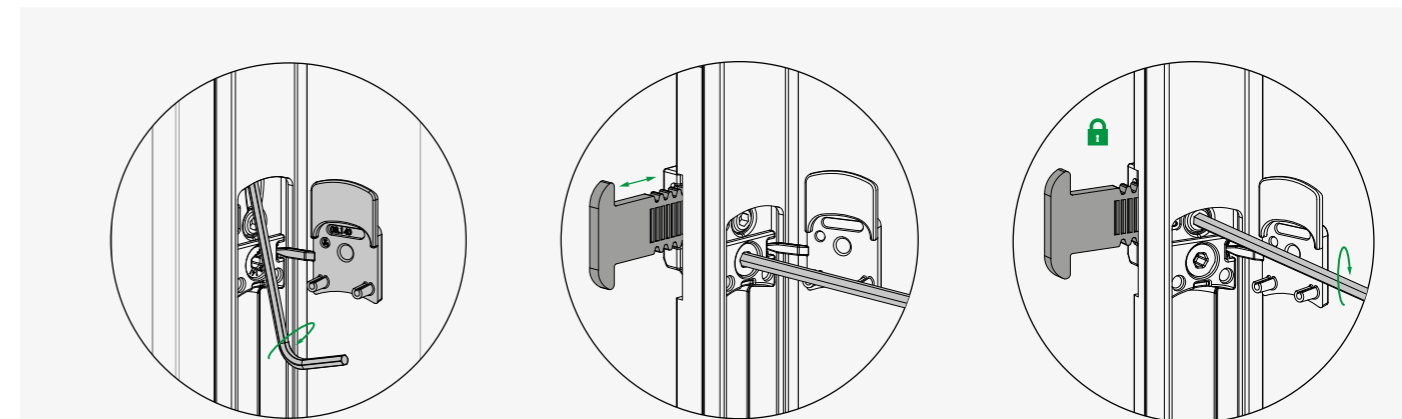
**Retention system.** A retention system which can be accessed from the front, which impedes removal of the lock from the frame after installation.



### Durability

The system for fixing the locks to the profile are made of highly resistant technical plastics and the finger pulls are made of Zamak, providing greater strength and robustness on closure.

**With & Without key versions.** Specially for clients who are looking for a safer option, a key version of the lock is available, which allows to block the window opening.



RETENTION SYSTEM

HOOK ADJUSTMENT

HOOK FIXING

034000 \*\*


SLIDING HANDLE WITHOUT KEY



Icons: Sliding window, finishes (white/black, RAL, ANODIC), 40 units per box

034100 \*\*


SLIDING HANDLE WITH KEY



Icons: Sliding window, finishes (white/black, RAL, ANODIC), 40 units per box

034200 \*\*

FINGER PULL



Icons: Sliding window, finishes (white/black, RAL), 50 units per box

034300 \*\*

PULL HANDLE



Icons: Sliding window, finishes (white/black, RAL), 15 units per box

TITAN HOOKS



Dimensions: L, H

REFERENCE	L (mm)	H (mm)
03150	38	2
03151	33,9	0
03152	37,85	4
03153	45,85	4
03154	32,5	1,5



Dimensions: W, D

REFERENCE	W (mm)	D (mm)
0403149	18,5	9,5


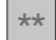






[www.stac.es](http://www.stac.es)

Icon index



Scan the QR code with your smartphone to access the product directly

-  Product valid for sliding windows
-  Product available in different finishes
-  Finish in white / black powder coated
-  Special finishes
-  Anodized finish
-  Units per box

**STAC CENTRAL España**  
 Pol. industrial Picusa s/n  
 15900 Padrón (A Coruña)  
 T (+34) 981 817 036  
 F (+34) 981 817 037  
 comercial@stac.es

**STAC Polska**  
 Ul. Kluczevska 2A  
 32-300 Olkusz  
 T/F (+48) 322 630 740  
 r.berus@stac.es (North)  
 p.adam@stac.es (South)

**STAC Maroc**  
 Route Nationale 1 m, 92  
 C. Rurale Laouamra, Larache  
 T (+212) 539 521 136  
 F (+212) 539 521 136  
 maroc@stac.es

MKT-0180EN 10/2017

# TITAN SLIDING HANDLES

Security, durability & adjustment