

SPAZIO



TILT AND SLIDING MECHANISM FOR EURO-GROOVE PROFILES

Comfort
Reduced dimensions
Wide ventilation
Safety against unhooking



Comfort

It allows better sound and thermic insulation, good light irradiation and more safety.

Dimensions

It doesn't take up space and it doesn't obstruct the use of curtains or the positioning of furniture in its proximity.

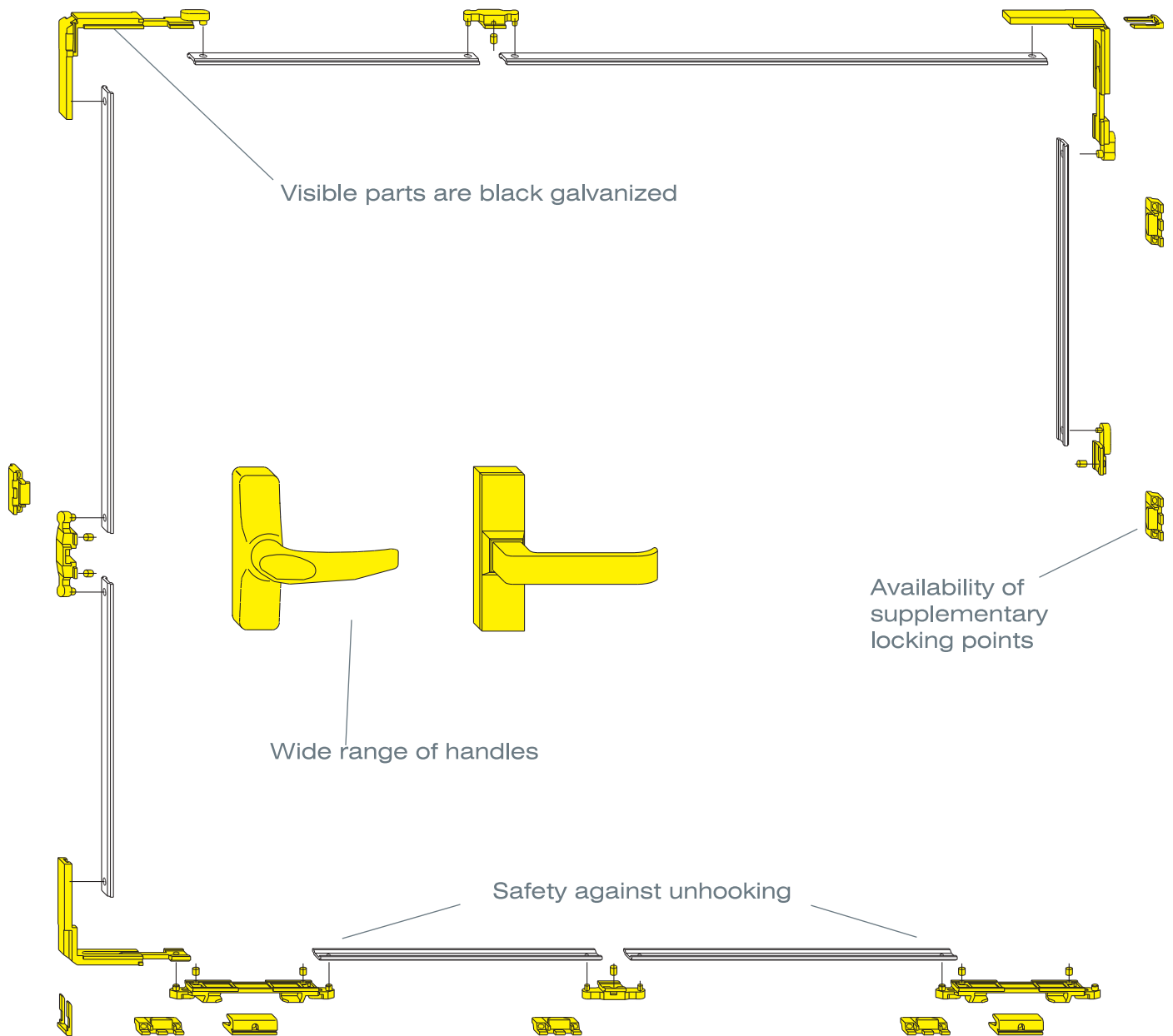
Ventilation

The windows and doors have the same performance as the traditional euro-groove systems, furthermore thanks to the tilt position, allow to ventilate through the simple rotation of the handle.

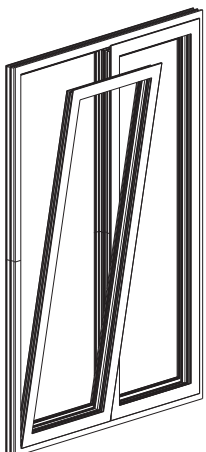
Non-handed

All components, except the rollers, are non-handed.

8 Closing points version



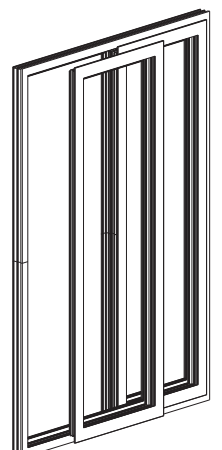
Art. 2405/900, /1100, /1330, /1650: guides and covers



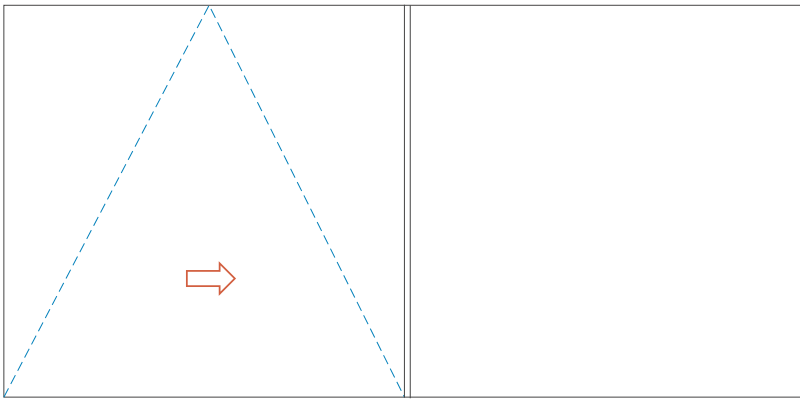
Scissor arm: extremely resistant, it allows easy unhooking of the sash thanks to the provided key.



Rollers: they allow easy sliding movements, also for sashes of considerable dimensions and weights; they are adjustable, to permit a better settlement of the sash into the fixed frame. Weight capacity: 150 Kg; it is possible to build high dimension sashes with bullet proof and laminated glasses.

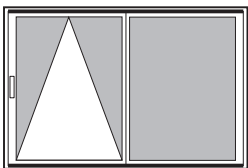


Tilt and slide mechanism for euro-groove profiles

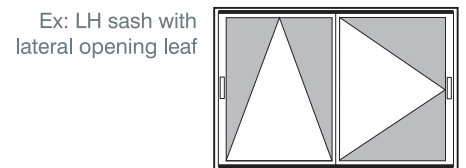


Description	Code	Pcs.	H mm	850		1401		850		1401		
				1400	2400	1400	2400	1400	2400	1400	2400	
			W mm	700		901		1101		1331		
				900		1100		1330		1650		
Left hand roller basic Kit	2400.1	1										
Right hand roller basic Kit	2400.2	1		1	1	1	1	1	1	1	1	
Guides and covers	2405/900	1		1	1							
	2405/1100	1				1	1					
	2405/1330	1						1	1			
	2405/1650	1								1	1	
Locking Kit	2410	5		1	1	1	1	1	1	1		
MANON handle	873.1/.2	5		1								
MANON handle with safety cylinder	873.753/.754	5										
MANON handle without grip	873.755/.756	5										
AL extruded handle	1243.750	5										
Grip	1243.599	1										
Locking piece	1243.710	40								2	2	
Adjustable Keeper	1243.721	40			2		2		2	2	4	
Upper corner device	1243.790	10			1		1		1			

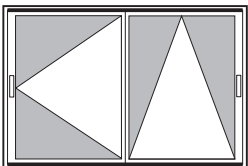
Combinations (Sash width from 700 to 1650 mm - Sash height from 850 to 2400 mm - Max. weight 150 Kg)



Ex: LH sash with lateral fixed light

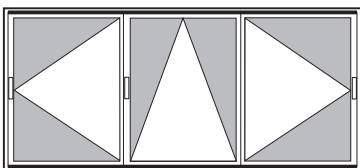
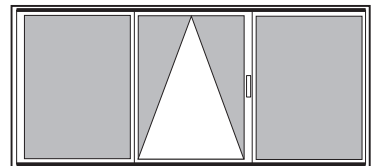


Ex: LH sash with lateral opening leaf



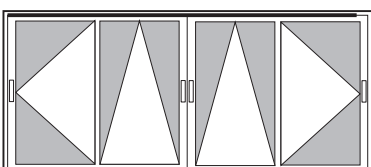
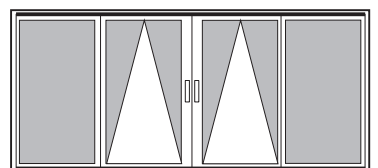
Ex: RH sash with lateral opening leaf

Ex: LH sash with lateral fixed lights



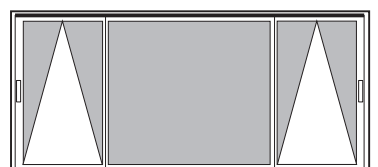
Ex: LH sash with lateral opening leaves

Ex: LH and RH sashes with lateral fixed lights



Ex: LH and RH sashes with 2 opening leaves

Ex: LH and RH sashes with central fixed light

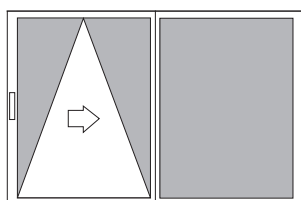


Tilt and slide mechanism

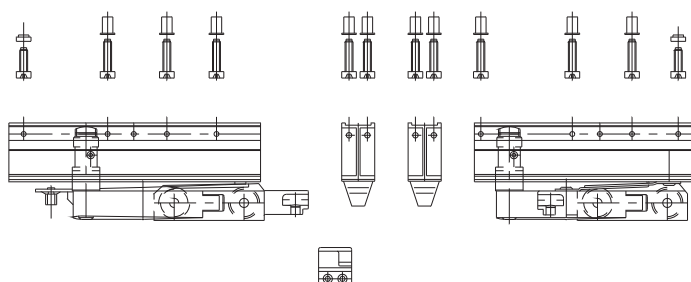
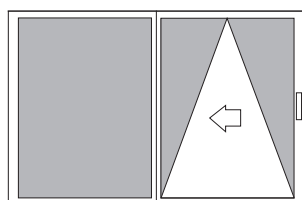
**2400.1 - 2400.2**

code	description	finishes	pcs.
2400.1	Basic kit of left hand rollers. Complete kit with 1 pair of rollers in aluminium and die-cast zamak, 2 rollers cover supports and 2 arm hooking sliding pieces in nylon, 1 unhooking key in galvanized steel, 1 sash return guide block in galvanized zamak, 1 bag with 10 pop-rivets M5 in galvanized steel, 2 plates M5 in zamak, 16 cap screws M5x18, 2 cap screws M5x15 and 19 self tapping countersunk head screws Ø 4,2x25 in stainless steel 304. Weight capacity: 2 rollers max 150 Kg.		1
2400.2	Basic kit of right hand rollers. Complete kit with 1 pair of rollers in aluminium and die-cast zamak, 2 rollers cover supports and 2 arm hooking sliding pieces in nylon, 1 unhooking key in galvanized steel, 1 sash return guide block in galvanized zamak, 1 bag with 10 pop-rivets M5 in galvanized steel, 2 plates M5 in zamak, 16 cap screws M5x18, 2 cap screws M5x15 and 19 self tapping countersunk head screws Ø 4,2x25 in stainless steel 304. Weight capacity: 2 rollers max 150 Kg.		1

Art. 2400.1



Art. 2400.2



Tilt and slide mechanism



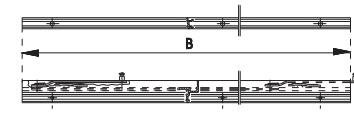
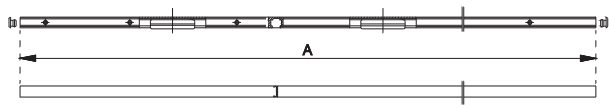
2405/900, /1100, /1330/, 1650

code	description	finishes	pcs.
2405/900	Guides, covers (L=from 700 to 900 mm) and sash spacer profile in aluminium, 2 guide closing caps, 2 lower cover caps and 2 upper cover caps in nylon, 1 roller link rod, 1 group of arms for bottom hung casement opening out, 1 spring in galvanized steel, sash stop device in die-cast zamak.	9010, F, ZE	1
2405/1100	Like 2405/900 but L=from 901 to 1100 mm.	9010, F, ZE	1
2405/1330	Like 2405/900 but L=from 1101 to 1330 mm.	9010, F, ZE	1
2405/1650	Like 2405/900 but L=from 1331 to 1650 mm.	9010, F, ZE	1
2410	SPAZIO Closing kit, Basic kit (4 locking points) with corner devices, transmission and movement devices, hooks and closing point in black zamak, screws in stainless steel 304.		5

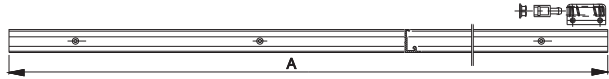
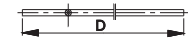
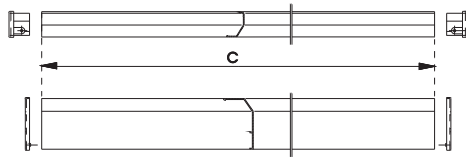


2410

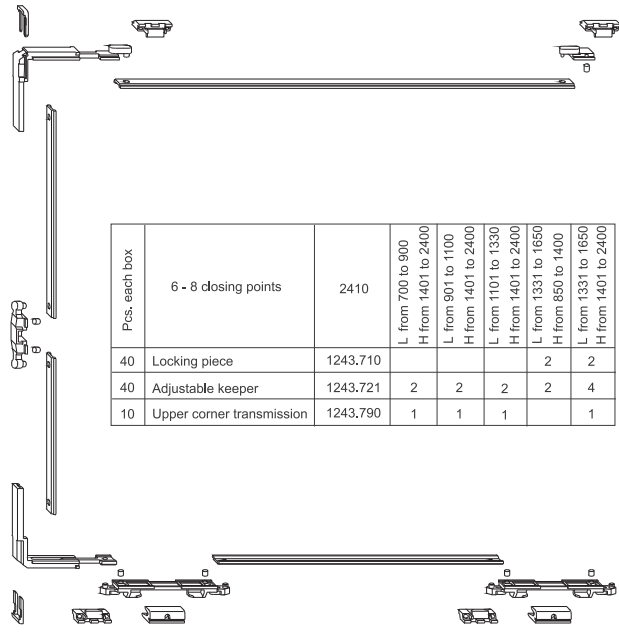
Spazio



Art.	A	B	C	D
2405/900	2000	620	960	585
2405/1100	2400	820	1160	785
2405/1330	2860	1020	1390	1015
2405/1650	3460	1220	1650	1270



2405/900, /1100, /1330, /1650



Pcs. each box	6 - 8 closing points	2410	L from 700 to 900 H from 1401 to 2400	L from 901 to 1100 H from 1401 to 2400	L from 1101 to 1330 H from 1401 to 2400	L from 1331 to 1650 H from 850 to 1400	L from 1331 to 1650 H from 1401 to 2400
40	Locking piece	1243.710				2	2
40	Adjustable keeper	1243.721	2	2	2	2	4
10	Upper corner transmission	1243.790	1	1	1		1

2410

Tilt and slide mechanism



1243.701



1243.710



1243.713



1243.714



1243.790



1246.703



1243.721



1243.725

code	description	finishes	pcs.
1243.701	Locking piece in black galvanized zamak, 1 polyurethane cap.		40
1243.710	Locking piece in black galvanized zamak, 1 polyurethane cap.		5
1243.713	Locking piece in black galvanized zamak, 1 polyurethane cap.		40
1243.714	Upper corner drive in black galvanized zamack.		10
1243.790	Upper corner drive in black galvanized zamack.		10
1246.703	Upper corner drive in black galvanized zamack.		10
1243.721	Adjustable keeper in black galvanized zamak, 2 preassembled grub screws M5x12 and 1 countersunk head screw M4x8 in stainless steel 304.		40
1243.725	Adjustable keeper in black galvanized zamak, 1 pre-assembled grub screw M5x6 in stainless steel 304.		40

Tilt and sliding mechanisms

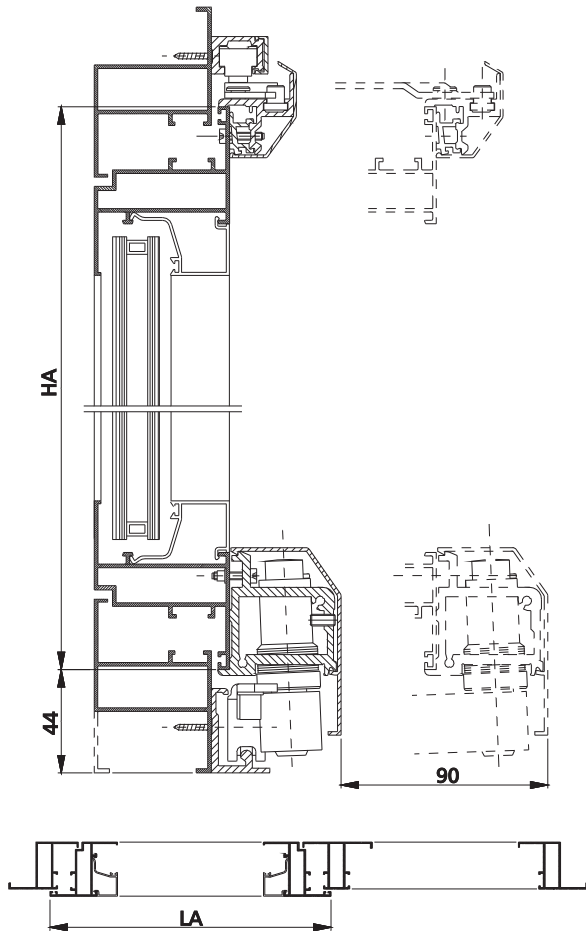
Application field

H	2400	36	31	28	25	23	21	19	18	17	16	15
	2300	37	33	29	26	24	22	20	19	17	16	16
	2200	39	34	30	27	25	23	21	19	18	17	17
	2100	41	36	32	29	26	24	22	20	19	18	17
	2000	43	38	33	30	27	25	23	21	20	19	18
	1900	45	39	35	32	29	26	24	23	21	20	19
	1800	48	42	37	33	30	28	26	24	22	21	20
	1700	50	44	39	35	32	29	27	25	24	22	21
	1600	54	47	42	38	34	31	29	27	25	23	23
	1500	57	50	44	40	36	33	31	29	27	25	24
	1400	●	54	48	43	39	36	33	31	29	27	26
	1300	●	●	51	46	42	38	36	33	31	29	28
	1200	●	●	56	50	45	42	38	36	33	31	30
	1100	●	●	●	55	50	45	42	39	36	34	33
	1000	●	●	●	●	55	50	46	43	40	38	36
900	●	●	●	●	●	56	51	48	44	42	40	
850	●	●	●	●	●	●	54	50	47	44	43	
	700	800	900	1000	1100	1200	1300	1400	1500	1600	1650	
	L											

Feasible with max. glass thickness of 59 mm

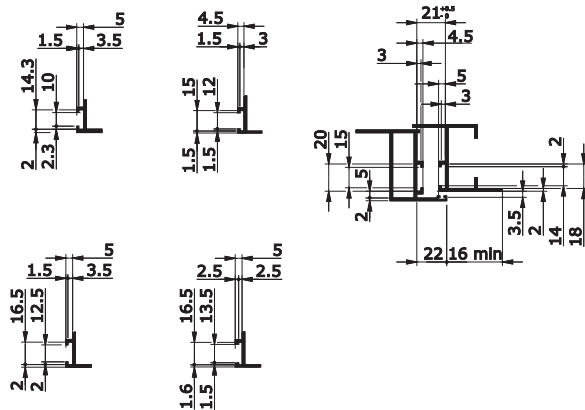
Feasible with max. glass thickness indicated (ex. 20 mm)

NOTE: glass thickness refers to the thickness of the material without air space.



DIMENSIONS	
LA = Sash width from 700 to 1650 mm	
HA = Sash height from 850 to 2400 mm	
Sash max. weight = 150 Kg	

Profile grooves



Savio S.p.A.

Via Torino, 25 (s.s. 25) - 10050 Chiusa S. Michele (TO)

tel. +39 011 964 3464 - fax +39 011 964 3474

www.savio.it - savio@savio.it